

---

# Return to School Roadmap

Reimagining School  
*In the COVID-19 Environment*

Update July 16, 2020

*Office Hours*

---

# *Roadmap to Re-Opening Status*

**Fall 2020-21**



## **PURPOSE**

- **Physical and social-emotional well-being**
- **Eliminating the achievement gap while providing a rich, high-quality academic program**
- **Optimize financial and human resources**
- **Bold thinking**

## **Items for discussion**

**State & Local Update**

**KSD Framework**

**Define Distance Learning**

**Preparedness for Distance Learning**

**Communication Timeline**

**Frequently Asked Questions**

---

---

**San Quentin State Prison COVID-19:**

San Quentin Active Cases\*\* 1,211

Change from prior day -229

**State Local Update:**

7/3 Marin added to the [“watch list”](#)

7/13 Governor announced the immediate closure of identified business

7/15 [Marin Public Health Recommends Delay](#)

[For Full Return of In-Classroom Learning](#)

7/17 Governor Newsom to Provide Update on COVID-19 Guidance for Schools

COVID-19 activity in Marin:	Today's Report	Change from Yesterday
Total Confirmed Cases**	1,909	+53
<b>Current Hospitalizations</b>	32	+6
Tests Completed in Marin*	39,566	+940

---

# State & Marin County COVID-19 Update

---

# Latest Marin Public Health Recommendation - July 15



## What does this mean?

**Gradual approach** that includes distance learning and small in-person groups

Allow for staff and students to be **oriented to the health and safety guidelines**

The phased-in approach is in **response to surges** in COVID-19 cases

Districts **may choose to bring small groups of students** into the classroom to get to know their new classroom environment and conduct academic and emotional assessments

Teachers can **return to the classroom and meet with students** individually or in small cohorts, as well as **prepare for the eventual return** to in-classroom instruction when Marin Public Health deems it safe to do so

Local data, safety readiness, testing availability and—**with guidance from Marin County Public Health, local districts may begin in-person instruction no sooner than September 8**

# State & Local Message

Dr. Matt Willis  
Governor Gavin Newsom  
July 16, 2020

## **Governor Newsom to Provide Update on COVID-19 Guidance for Schools**

**WHEN:** Friday, July 17, 2020 at 12:00 p.m. PDT

**LIVESTREAM:** [@CAgovernor](#) Twitter page and  
[California Governor Facebook](#) page.

## KEY TAKEAWAYS

Modification Mode - Use of a  
“dimmer switch”

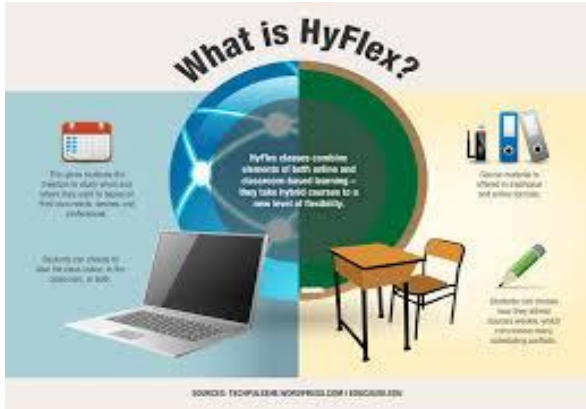
Increase rates in hospitals, ICU, and  
positivity rate

Monitoring community rates &  
incidents to inform phasing

COVID-19 is not going away; until  
vaccine or effective therapy

---

# Kentfield School District Framework



## CONNECTEDNESS

### State Required Daily Instructional Minutes

K: 180/3hr, 1-3: 230/3hr50min, 4-12 240/4hr

Focus on essential academic standards through an inquiry based approach

Embed Social Emotional strategies for the wellbeing of our students

Be HyFLEX - Ready to pivot at a given moment

---

**Purpose:** Keep the focus on **eliminating the achievement gap while providing a rich, high-quality academic program** in whatever physical configuration is allowed



---

# Distance Learning Requirements

Confirmation or provision of **access** for all pupils to **connectivity and devices** adequate to participate in the educational program and complete assigned work.

**Examples:**

Technology Access - 1:1  
WiFi Connectivity

Content **aligned to grade level standards** equivalent to in-person instruction.

**Examples:**

Teaching at grade level standards-- with a focus on acceleration versus remediation

---

**Purpose:** Keep the focus on **eliminating the achievement gap while providing a rich, high-quality academic program** in whatever physical configuration is allowed

DISTANCE LEARNING  
Scavenger hunt  
outside edition



# Distance Learning Requirements

**Academic and other supports designed to address** the needs of pupils who are not performing at grade level, such as English learners, pupils with exceptional needs, pupils in foster care or experiencing homelessness, and pupils requiring mental health supports.

**Examples:**

Intervention Services  
Supplemental beyond core instruction

**Special education, related services,** and any other services required by a pupil's individualized education program with accommodations necessary

**Examples:**

All services offered per IEP, unless agreed upon amendment - compensatory for what is not offered



---

**Purpose:** Keep the focus on **eliminating the achievement gap while providing a rich, high-quality academic program** in whatever physical configuration is allowed



---

# Distance Learning Requirements

Designated and integrated instruction in **English language development** for English learners

**Examples:**

How are EL services imbedded during the academic day, services may be offered in a designated and integrated model with homeroom teacher.

**Daily live interaction** with certificated employees and peers for purposes of instruction, progress monitoring, and maintaining school connectedness

**Examples:**

Live interaction daily -- with teacher & peers  
Regular formative assessment

---

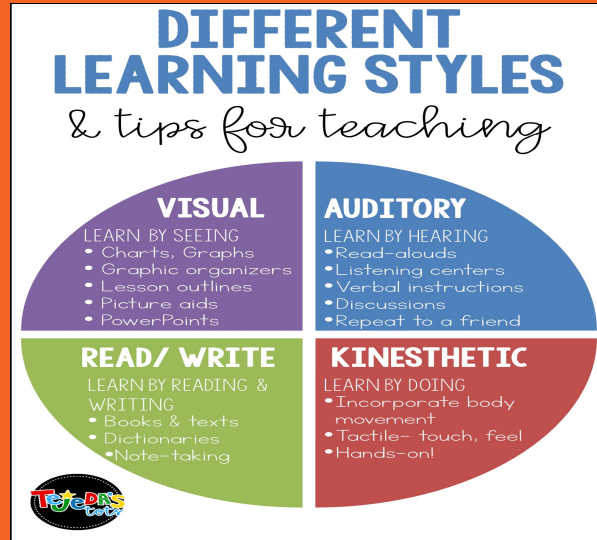
---

# Distance Learning

*A Multi-Modality Approach*

ENGAGE

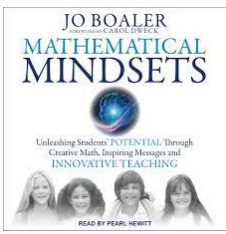
COMMUNICATE



LEARN

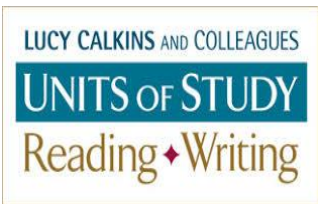
CREATE

---



# Professional Learning

*Distance Learning*



## AREAS OF FOCUS

Unified Plan and Framework -  
platforms, time allocation, apps, etc.

Momentum in Teaching K-8 Focus  
Lucy Calkins Units of Study

Social Justice Curriculum

Creative Mindset Mathematics

Brain Breaks - Mindfulness - SEL

Equity & Inclusion

Inquiry - Project Based Activities

# Kentfield School District Fall 2020 Plan

Communication Timeline  
***DRAFT***

**July 13-17** KSD Staff Info Sessions

**July 16** Staff & Community Office Hours  
*Framework Release*

**July 21** Regular Board Meeting

**July 23** Staff & Community Office Hours  
*Stakeholder Feedback & Information - Focus Groups announced*

**July 29-30** Stakeholder Info Sessions - Focus Groups  
(K-2, 3-5, 6-8 & ELAC/DELAC- 4 Sessions)

**Aug. 3-14** Summer Jump Start Pilot - *maybe*

**Aug. 10-14** Stakeholder Webinars Released

**Aug. 17-21** Staff BTS Preparation - Parent Info

**August 25** - First Day of School

# Frequently Asked Questions

1. Are we considering outside space for learning?
2. When can small groups come back for in-person learning?
3. Will my child's previous intervention time be provided?
4. Is there a prioritization for who might come back first?
5. How is childcare being addressed?
6. How can parents support in-person or distance learning?

---

---

Q&A

---